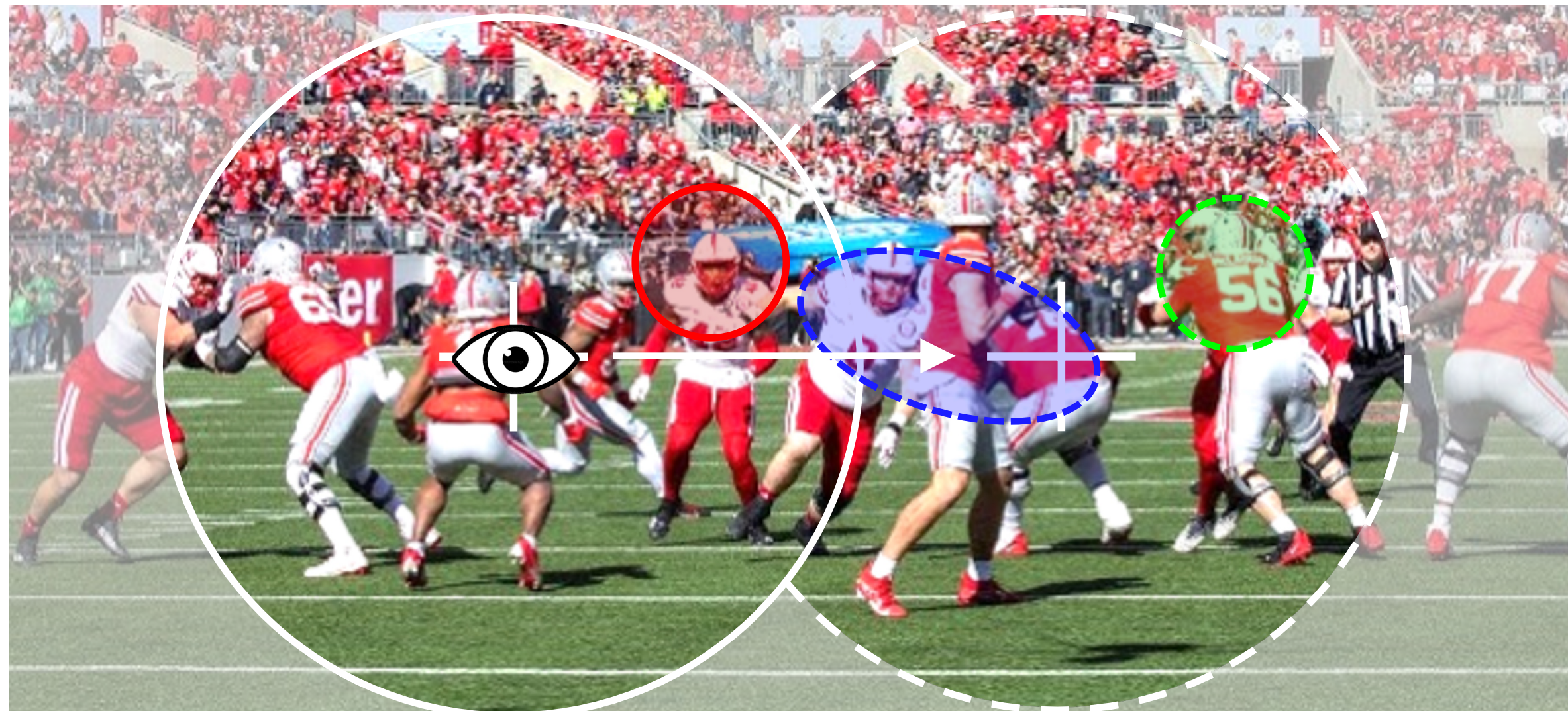


Voxel-Wise Predictive Encoding Models Reveal Evidence for Pre-Saccadic Remapping in the Human Visual Cortex

Yong Min Choi & Julie D. Golomb Department of Psychology, The Ohio State University

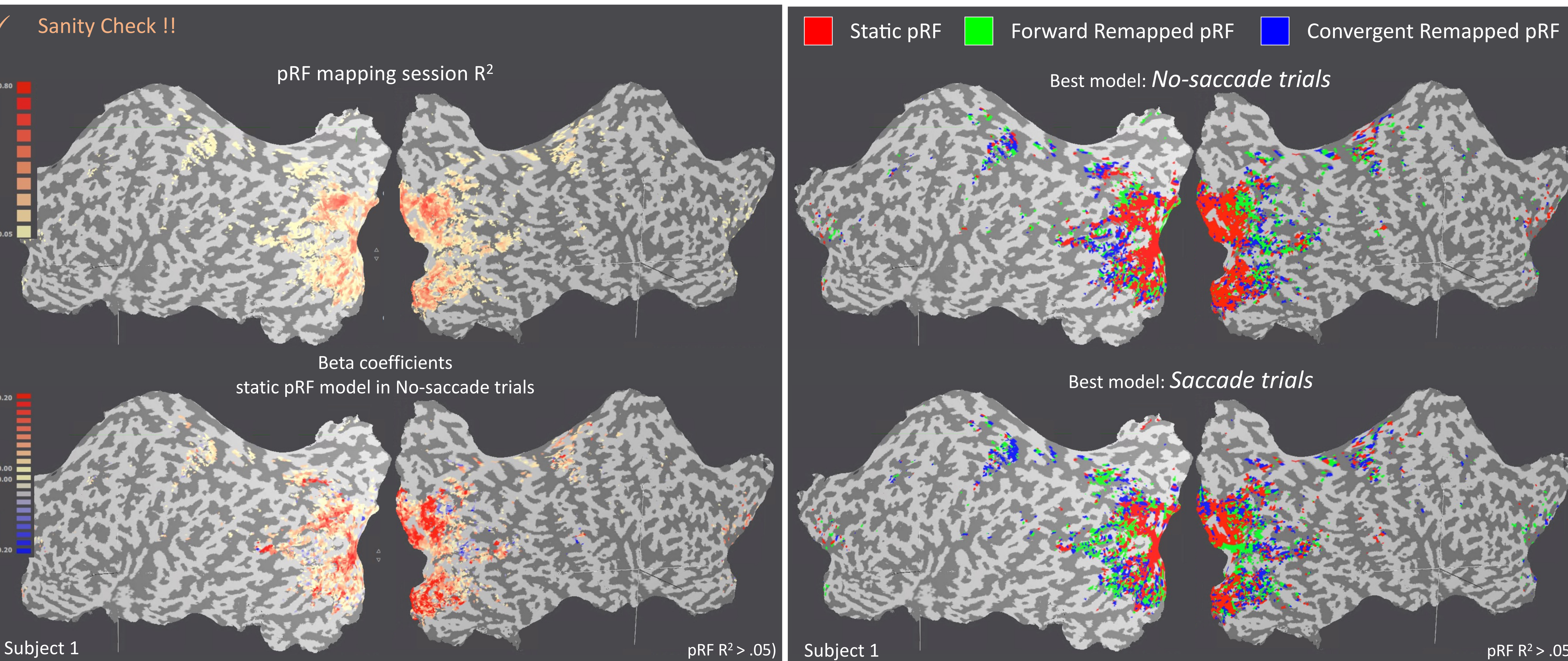
INTRODUCTION



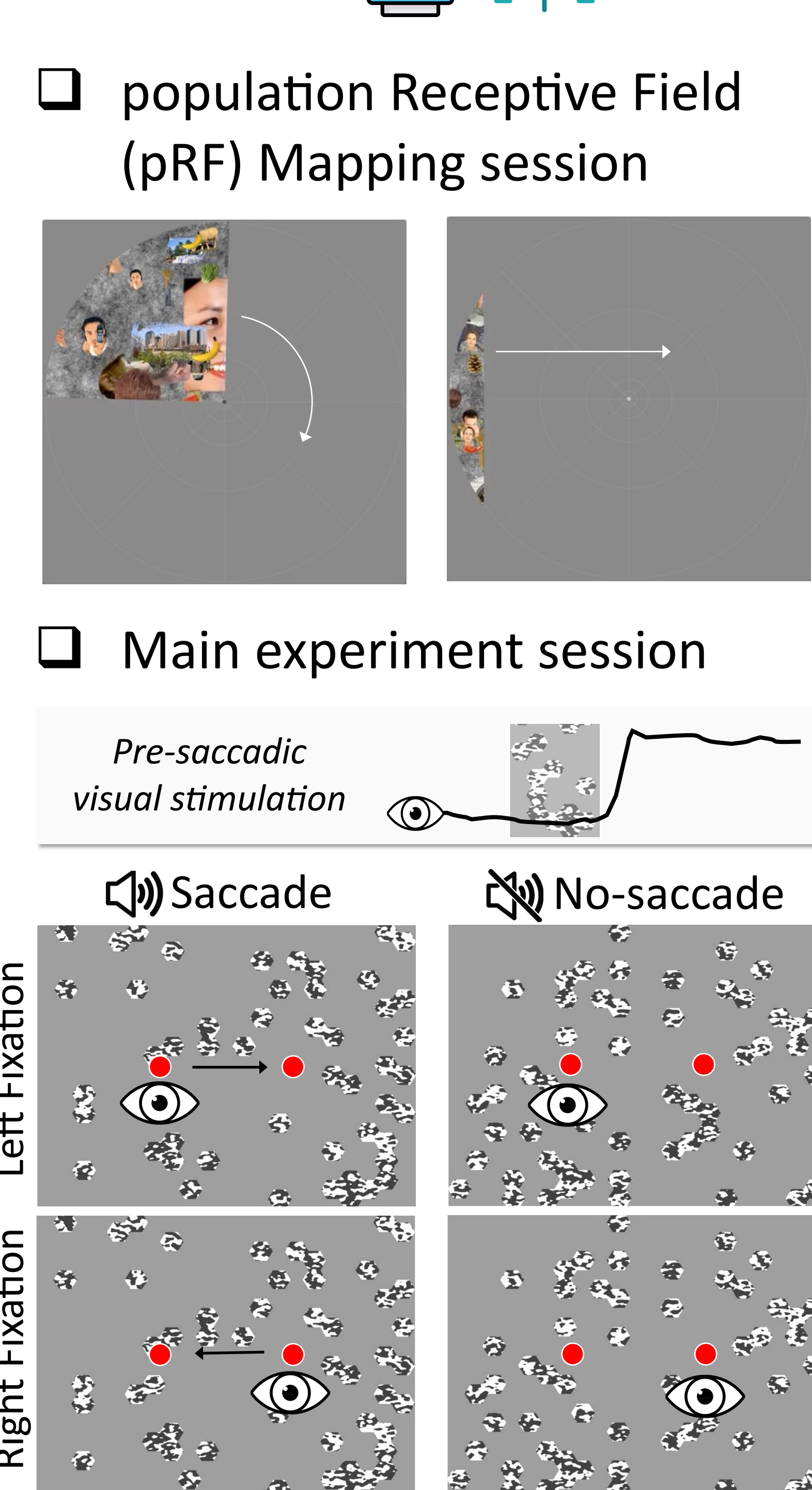
- Saccades drastically shift retinal visual inputs.
- Receptive fields (RFs)** of visual neurons in non-human primates are remapped toward new spatial locations in anticipation of saccade^{1,2}. (e.g., **Forward remapping**, **Convergent remapping**)
- Existing evidence mainly originates from invasive electrode recordings in non-human primate models³.
- It remains unclear whether analogous remapping is employed in the human visual system and how it relates to behavior³.

Can we develop a novel fMRI paradigm to study pre-saccadic remapping in the human brain?

PRELIMINARY RESULTS (N=5)

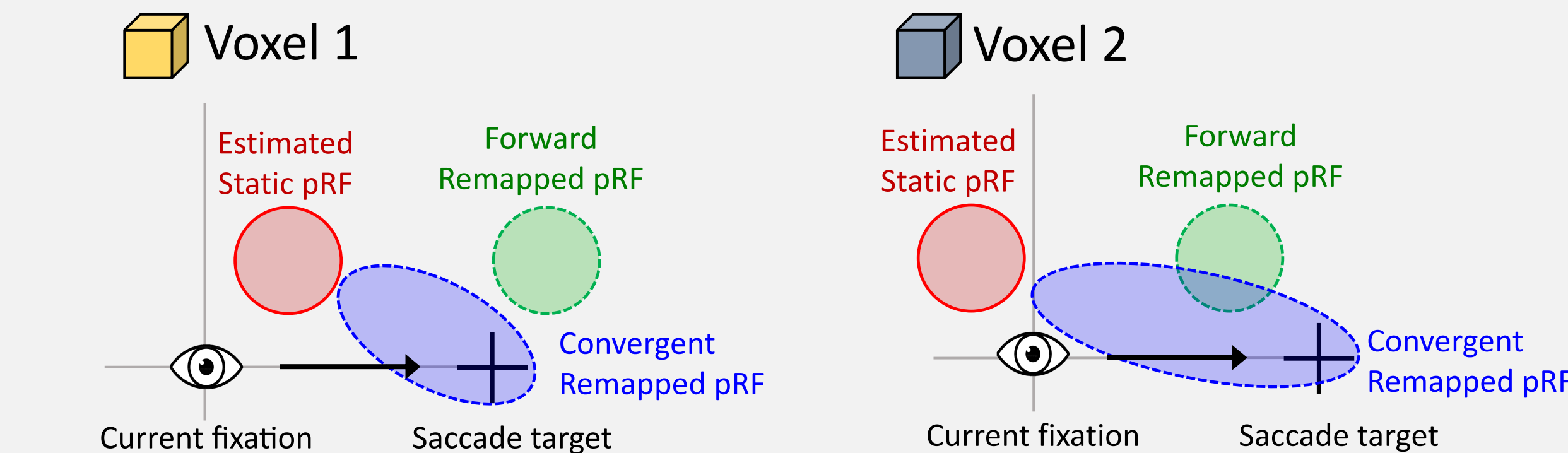


METHODS

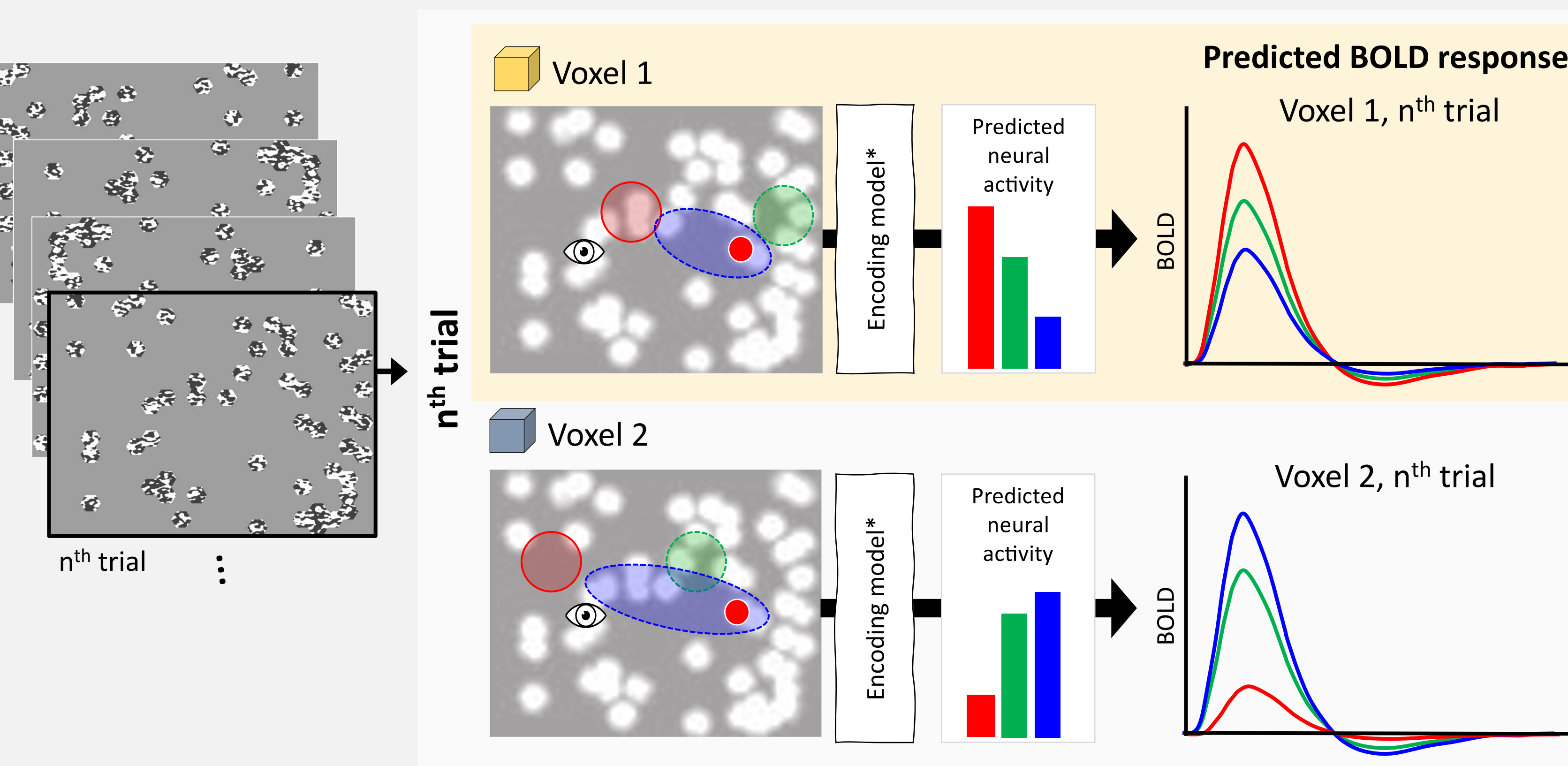


VOXEL-WISE ANALYSES

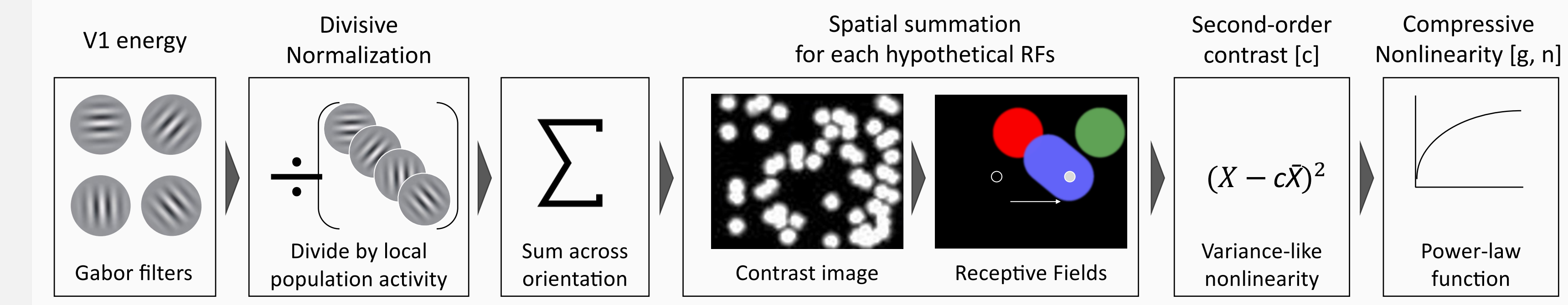
- Static and hypothetical remapped pRF models.



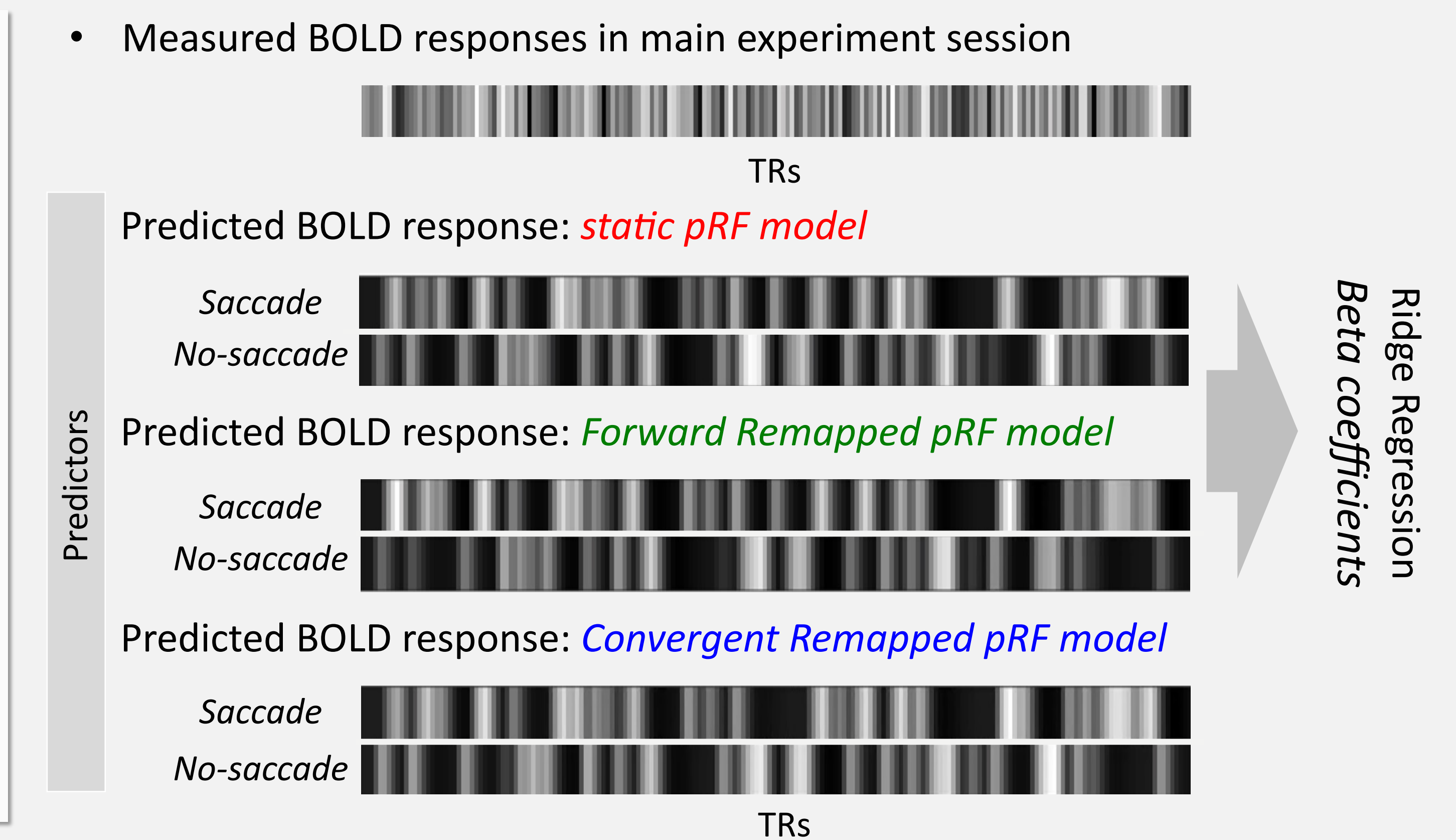
- Voxel-wise Predictive Encoding Model



*Second-Order-Contrast encoding model⁴



"Which model explains neural response the best?"



PRELIMINARY CONCLUSIONS

- We developed a novel paradigm to probe pre-saccadic remapping of receptive fields at a voxel level across the human visual system.
- Forward and convergent remapping was found across multiple retinotopic visual areas.

FUTURE DIRECTIONS

- More subjects & more sophisticated forms of remapping models.
- Thoroughly test how voxel-wise spatial remapping varies across the visual hierarchy.
- Does the type or extent of remapping depend on a voxel's pRF properties, functional specialization, and/or connectivity profile?

REFERENCES

- Duhamel et al. (1992). The updating of the representation of visual space in parietal cortex by intended eye movements. *Science*, 255(5040), 90-92.
- Neupane et al. (2016). Two distinct types of remapping in primate cortical area V4. *Nature communications*, 7(1), 10402.
- Golomb, J. D., & Mazer, J. A. (2021). Visual remapping. *Annual review of vision science*, 7(1), 257-277.
- Kay et al. (2013). A two-stage cascade model of BOLD responses in human visual cortex. *PLoS computational biology*, 9(5), e1003079.

"How is pre-saccadic remapping employed across visual areas?"

